



**MEMORANDUM**  
**COMMUNITY DEVELOPMENT RESOURCE AGENCY**  
**ENGINEERING AND SURVEYING DIVISION**  
County of Placer

TO: Board of Supervisors DATE: December 18, 2018

FROM: Steve Pedretti  
Agency Director

BY: Leslie Amsberry  
County Surveyor

SUBJECT: Colinas Estates Subdivision Final Map (Tract No. ESD18-00311)

---

**ACTION REQUESTED**

1. Authorize the Chair of the Board of Supervisors to sign the Colinas Estates Final Map and Subdivision Improvement Agreement, and approve recordation of the Final Map and the Agreement.

**BACKGROUND**

The Colinas Estates Subdivision is located on the south side of Joe Rodgers Road; approximately 600 feet southwest of the intersection of Auburn Folsom Road and Joe Rodgers Road (see Attachment 1). Colinas Estates was approved to create ten residential lots ranging in size from 21,693 square feet, to 30,056 square feet, and a private road on 5.49 acres (see Attachment 2).

The improvements proposed with this subdivision consist of streets, trails, sewer, drainage and utility infrastructure, survey monuments, and miscellaneous items. The street within this project is private, with maintenance provided by the property owner's association. A Subdivision Improvement Agreement has been prepared and security sufficient to cover labor/materials, and faithful performance for the public improvements has been posted with the County. The Subdivision Improvement Agreement is on file with the Clerk of the Board.

**ENVIRONMENTAL CLEARANCE**

A Mitigated Negative Declaration for Colinas Estates has been found adequate to satisfy the requirements of the California Environmental Quality Act (CEQA). The Mitigated Negative Declaration was approved by Planning Commission on April 12, 2018. Mitigation measures have been addressed by the Conditions of Approval for this subdivision.

**FISCAL IMPACT**

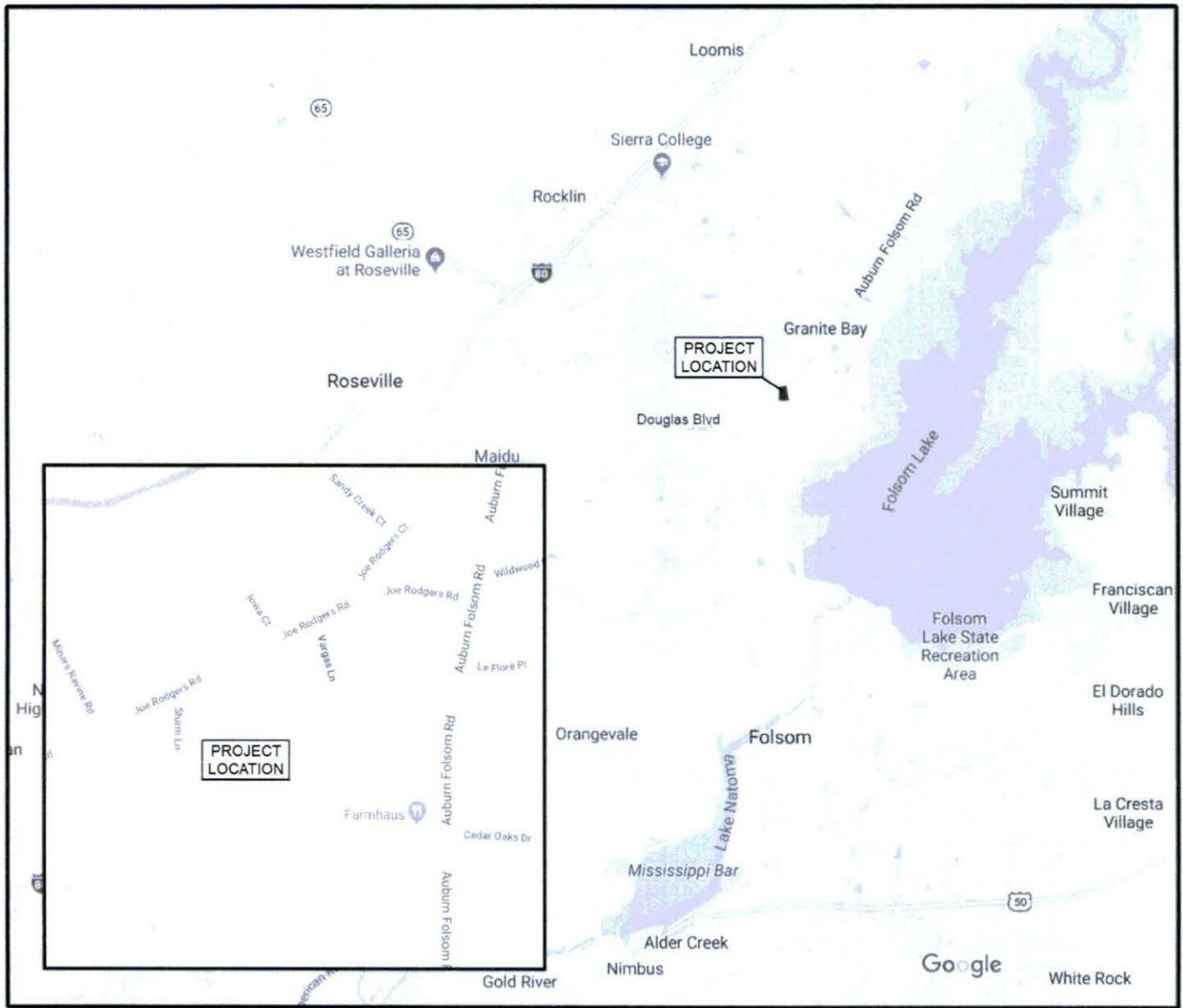
None.

**ATTACHMENTS**

Attachment 1: Vicinity Map  
Attachment 2: Map of Subdivision

# ATTACHMENT 1

## Colinas Estates - Vicinity Map



Map data ©2018 Google

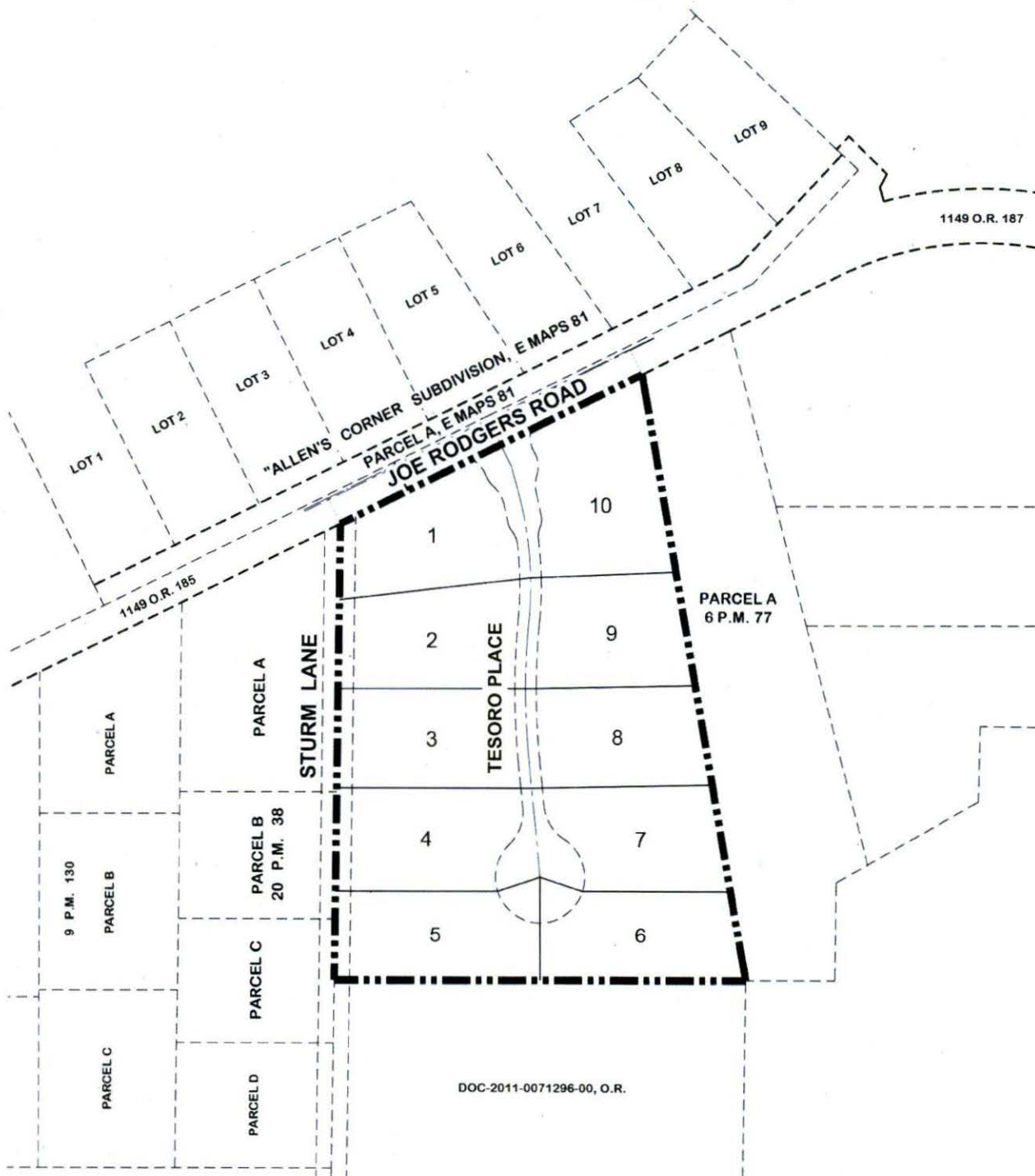
TRACT NO. ESD18-00311  
COLINAS ESTATES  
A PORTION OF THE EAST HALF OF THE EAST  
HALF OF SECTION 2, T. 10 N., R. 7 E., M.D.M.  
COUNTY OF PLACER, CALIFORNIA

COUNTY OF PLACER  
NOVEMBER 2018

NOT TO SCALE

# ATTACHMENT 2

## Colinas Estates - Project Map



DOC-2011-0071296-00, O.R.

TRACT NO. ESD18-00311  
COLINAS ESTATES  
A PORTION OF THE EAST HALF OF THE EAST  
HALF OF SECTION 2, T. 10 N., R. 7 E., M.D.M.  
COUNTY OF PLACER, CALIFORNIA

COUNTY OF PLACER  
NOVEMBER 2018

NOT TO SCALE

